



Beaufort County Public Works
Stormwater Infrastructure
Project Summary

Project Summary: Scott Community Center Complex
 Project #: 2010-013 Completed: Jul-09
 Narrative Description of Project:
 Project improved 941 L.F. of drainage system. Cleaned out 780 L.F. of outfall ditch and roadside ditch. Jetted (1) crossline pipe, (1) access pipe and 161 L.F. of outfall pipe.

Material Cost, Rental Equipment Summary, and Labor

Material	Unit	Cost/Unit	Qty	Cost
Water	gallon	\$0.01	3,000	\$30.00
Diesel	gallon	\$2.15	120.0	\$258.00
Gas	gallon	\$2.19	10.0	\$21.90
Labor	hours		103.5	\$3,627.93
Total Cost of Materials, Rental Equip., and Labor				\$3,649.83

Note: Labor cost includes the employee's salary plus fringe benefits.

Equipment Cost

Item	Asset	Cost/Hou	Hrs.	Cost
JCB Urban Excavator	23364	\$40.53	11.5	\$466.10
Vacuum Truck	22812	\$20.30	15.0	\$304.50
Dump Trucks		\$16.68	19.0	\$316.92
Pickup Trucks		\$4.17	14.5	\$60.47
Total Equipment Cost				\$1,147.98

Cost/hour excludes fuel cost.
 Total Cost: \$4,797.81

Site Photographs

Before



During



After



Project: Scott Community Center Complex

Activity: Drainage Maintenance

Project #: 2010-013

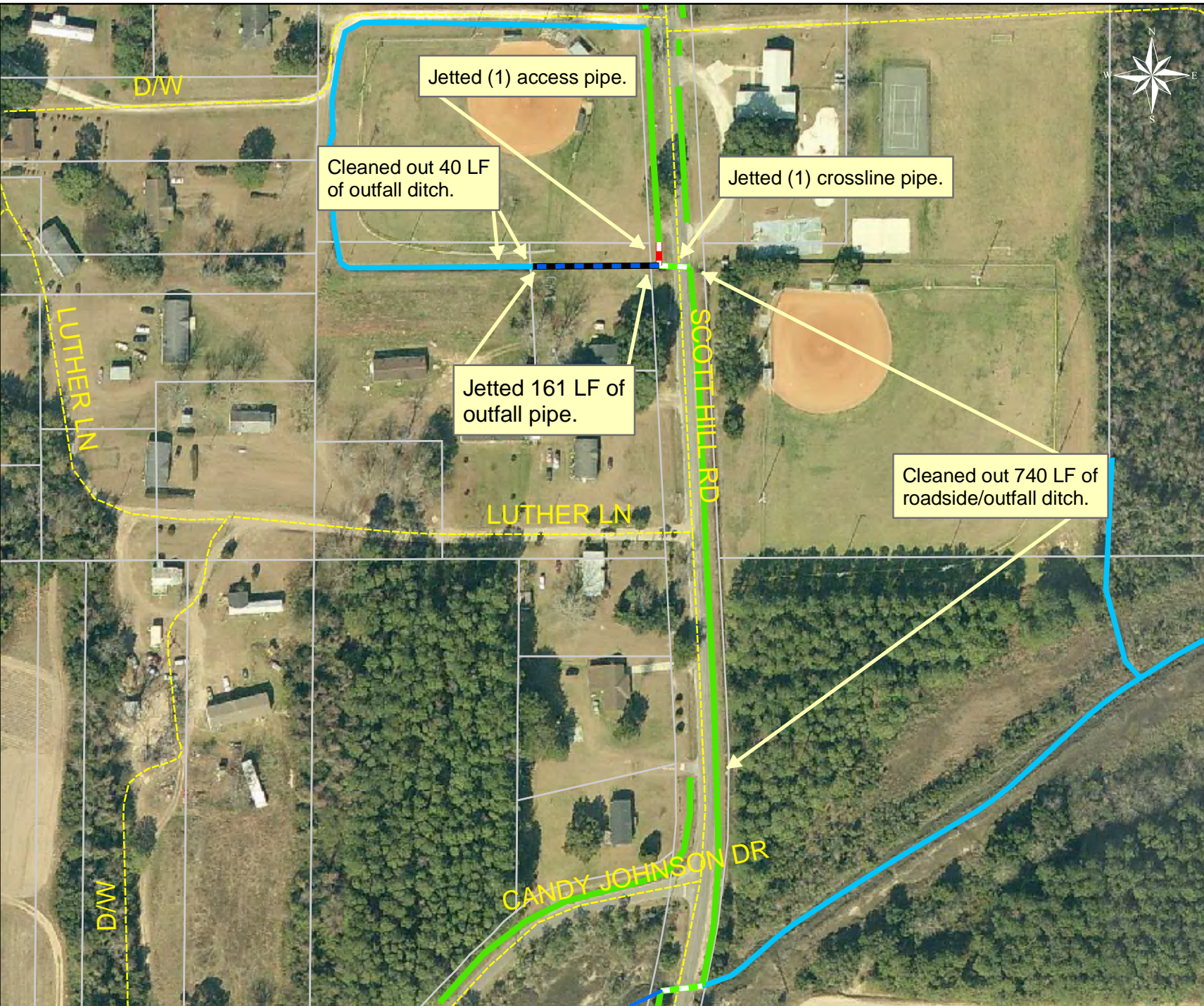
Township: St. Helena Island

Completed: July 2009

Legend

Drainage Type

- Rivers
- Streams
- Outfall Ditch
- Lateral
- Roadside
- Crossline
- Driveway
- Access Pipe
- Piped Ditch
- Bleeder Ditch
- Parcels



1 inch equals 169 feet